

# Catalogue of Services

A list of the current  
options available for  
educators working  
with children



Educator  
**Essentials**



Educator  
**Essentials**

# The Early Years Learning Framework & Kindy Uplift

## Designed in line with the Early Years Learning Framework...

All of the services in this catalogue have been thoughtfully designed by the Cooee team to support young learners in meaningful ways. Each service is created to help children:

- **Build a strong sense of identity**
- **Connect with and contribute to their world**
- **Develop a strong sense of well-being**
- **Grow as confident and involved learners**
- **Become effective communicators**



Our services have been created to align primarily with the **bolded Kindy Uplift funding key priority areas**, supporting Kindergartens to deliver high-quality learning experiences to strengthen:

- 1. Culturally safe, responsive and inclusive kindergarten programs**
  1. Embedding Aboriginal and Torres Strait Islander perspectives
- 2. Equity and access for all**
- 2. Social and emotional learning**
  3. Physicality
- 4. Executive function skills**
- 5. Language and literacy**
6. Mathematics and numeracy

Each offering is built to empower educators and communities in creating rich, engaging, and inclusive environments where children can thrive!

# Educator Essential Services

The types of services we offer



## **Presentations**

Our presentations are an **information-sharing session** led by a Speech Pathologist and/or Occupational Therapist, to deliver content, strategies and ideas for you to grow your knowledge. It is primarily speaker-led, with opportunities for questions and reflection.



## **Workshops**

Our workshops are a more **interactive and practical session** facilitated by a Speech Pathologist and/or Occupational Therapist. You'll be guided through discussions, activities and opportunities to practise strategies to bring the content and information to life and apply the learnings to your classroom/setting.



## **Tools & Resources**

**Practical, interactive supports** that can be used directly to build skills with a child, and **educational materials** that provide knowledge, strategies, and guidance in areas of development (e.g. video series, self-paced workbooks).



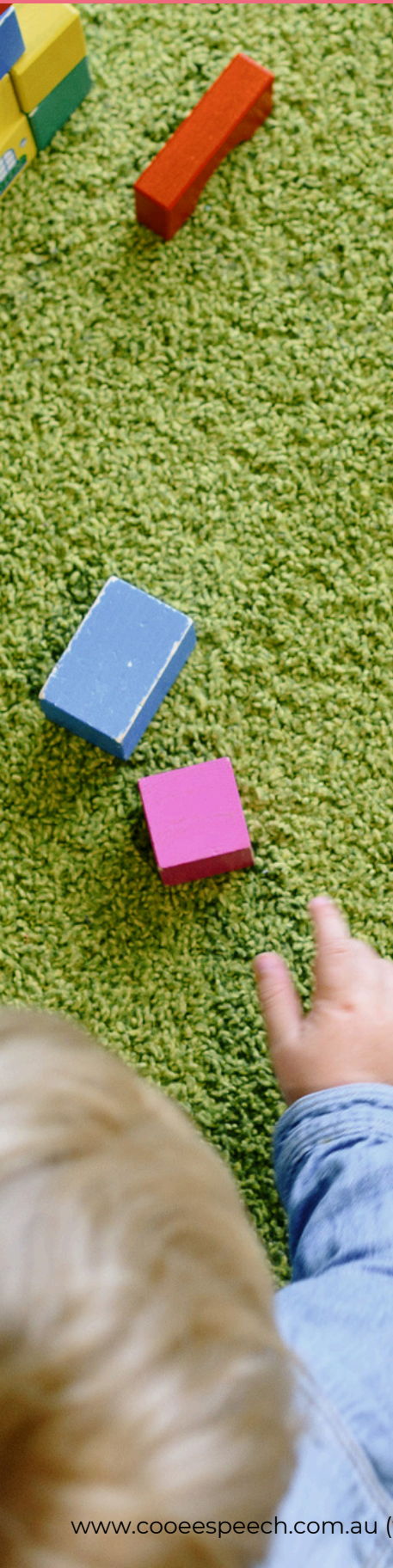
## **Collaborative Partnerships**

Providing **responsive and interactive education and recommendations** in either an **unstructured program** on a range of areas and skills in the Speech Pathology and/or Occupational Therapy scope, or a **structured program** focused on **upskilling in a specific area**. This service supports problem-solving for educators, and offers guidance to enhance participation and learning for all (e.g. whole class observation and adjustment planning, curriculum co-design, small group strategies).



# Catalogue of Services

A list of the current services we offer within our Educator Essentials



## Presentations & Workshops

- **Multilingual Language:** What to expect, and how to support communication **[page 5]**
- **The Two Journeys to Talking:** Understanding different types of language development **[page 5]**
- **Playing with Words:** How Play and Language Grow Together **[page 6]**
- **Creating Calm and Curious Learners:** Play, Sensory Processing & Executive Functioning Skills in Kindy-Aged Children **[page 6]**
- **Calm, Connected, and Ready:** Understanding Sensory Processing & Regulation in the Kindy classroom **[page 7]**
- **A Communication-Friendly Kindy:** What is it, why is it important, and how will we do it? **[page 7]**
- **Speech, Literacy, Language, and Regulation:** Linking It Together to Learn **[page 8]**
- **Hand in Hand:** How Literacy and Handwriting Grow Together **[page 8]**
- **Custom:** Customised learning, tailored to your learning goals and setting **[page 9]**

*All of the above topics are available as a 'Presentation' or a 'Workshop' - please specify this at the time of enquiry/booking.*



## Parent Presentations

- **Speech Pathology and Occupational Therapy:** What to Expect **[page 10]**
- **Kindy Readiness:** A SP and OT Perspective **[page 10]**

*(Continued...)*

# Catalogue of Services

A list of the current services we offer within our Educator Essentials Services

## Parent Presentations (continued...)

- **Prep Readiness:** A SP and OT Perspective **[page 11]**
- **Multilingual Communication:** Supporting Many Languages **[page 11]**



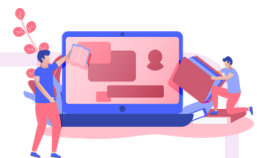
## Online Tools & Resources

- Growing Language for the Multilingual Child (Workbook) **[page 13]**
- Multilingual Communication Development for Children (Online Training Series) **[page 13]**
- Information Sheets (Free Downloadables) **[page 14]**



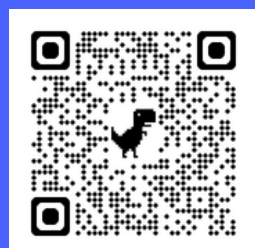
## Collaborative Partnerships

- Program for Regulation **[page 15]**
- Consultative Learning **[page 16]**



**Book now through our website, or by scanning the QR code**

**<https://www.cooeespeech.com.au/services/community-connections>**



Educator  
**Essentials**



# Presentations & Workshops

## Multilingual Language: What to expect, and how to support communication

Topics covered:

- What multilingual language development looks like
- Supporting school readiness
- Strategies to support English language development

Length: 1.5 hours

Cost: From \$660 (gst inclusive)

Inclusions: copy of presentation slides, key summary sheets, information handouts

Extras: workbook, follow-up consultation (*quote provided upon enquiring*)



## The Two Journeys to Talking: Understanding different types of language development

Topics covered:

- The 2 types of language development - analytic vs gestalt language processing
- Key features and principles of development
- Supporting communication and growth for both styles

Length: 1.5 hours

Cost: From \$660 (gst inclusive)

Inclusions: copy of presentation slides, key summary sheets, information handouts

Extras: workbook, follow-up consultation (*quote provided upon enquiring*)





# Presentations & Workshops

## Playing with Words: How Play and Language Grow Together

Topics covered:

- The importance of play skills
- How play and language develop together
- Strategies to support play and language to grow together

Length: 1.5 hours

Cost: From \$825 (gst inclusive)

Inclusions: copy of presentation slides, key summary sheets, information handouts

Extras: workbook, follow-up consultation (*quote provided upon enquiring*)



## Creating Calm & Curious Learners: Play, Sensory Processing & Executive Functioning Skills in Kindy-Aged Children

Topics covered:

- Strategies to promote play skills, creativity, problem-solving, and social engagement
- Understanding sensory needs and creating a sensory-friendly environment for learning
- Understanding and supporting skills such as ideation, planning & organising, inhibition, and emotional regulation

Length: 1.5 hours

Cost: From \$660 (gst inclusive)

Inclusions: copy of presentation slides, key summary sheets, information handouts

Extras: workbook, follow-up consultation (*quote provided upon enquiring*)



Educator  
**Essentials**



# Presentations & Workshops

## Calm, Connected, and Ready: Understanding Sensory Processing & Regulation in the Kindy Classroom

Topics covered:

- Understanding and supporting sensory needs in the classroom
- How to create a sensory-friendly environment that enhances learning and participation
- Understanding and supporting the different types of regulation (emotional, cognitive, and behavioural)



Length: 1.5 hours

Cost: From \$660 (gst inclusive)

Inclusions: copy of presentation slides, key summary sheets, information handouts

Extras: workbook, follow-up consultation (*quote provided upon enquiring*)



## A Communication-Friendly Kindy: What is it, why is it important, and how will we do it?

Topics covered:

- What is AAC & why it's important
- How AAC supports communication, participation and learning
- How to implement AAC in the classroom

Length: 1.5 hours

Cost: From \$660 (gst inclusive)

Inclusions: copy of presentation slides, key summary sheets, information handouts

Extras: workbook, follow-up consultation (*quote provided upon enquiring*)





# Presentations & Workshops

## Speech, Literacy, Language, and Regulation: Linking It Together to Learn

Topics covered:

- What are speech, literacy, language and regulation skills, and how do they work together
- Why are these skills important for learning
- How to scaffold children & support their participation

Length: 1.5 hours

Cost: From \$825 (gst inclusive)

Inclusions: copy of presentation slides, key summary sheets, information handouts

Extras: workbook, follow-up consultation (*quote provided upon enquiring*)



## Hand in Hand: How Literacy and Handwriting Grow Together

Topics covered:

- The skills that go into reading and writing
- The stages of development for reading, writing and spelling skills
- Practical strategies and activities to support reading, spelling and writing in sessions

Length: 1.5 hours

Cost: From \$825 (gst inclusive)

Inclusions: copy of presentation slides, key summary sheets, information handouts

Extras: workbook, follow-up consultation (*quote provided upon enquiring*)



Educator  
**Essentials**



# Presentations & Workshops

## Custom

Customised content designed in collaboration with you, to address topics, content, skills and strategies specific to you/your team and your setting.

Service includes:

- Personalised slides and materials
- Individualised content and strategies



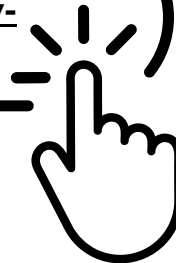
**Please enquire directly with our Non-Therapy Services Coordinator to receive a personalised quote for your service.**



## Ready to Learn?

Book your presentation or workshop now by submitting your enquiry to our Non-Therapy Services Coordinator:

<https://www.cooeespeech.com.au/services/community-connections>



For any non-enquiry questions or thoughts (e.g. which presentation is right for me, what would a workbook include), reach out to Cooee's Non-Therapy Services Coordinator

Thida

thida@cooespeech.com.au



Educator  
**Essentials**



# Parent Presentations

## Speech Pathology and Occupational Therapy: What to Expect

Topics covered:

- Scopes of practice for SP & OT - what they do
- How to access services at Cooee Speech Pathology & Occupational Therapy
- Top 5 SP & OT tips for boosting developmental skills



Length: 1 hour (40-minute presentation, 20-minute Q&A)

Cost: \$0 - complimentary for online or in-person (for local travel)

Inclusions: copy of presentation slides, key summary sheets, information handouts

Extras: non-local travel (20+ minutes), personalised content (*quote provided upon enquiring*)



## Kindy Readiness: A SP and OT Perspective

Topics covered:

- What do Speech Pathologists / Occupational Therapists do?
- Key skills for the Kindy classroom
- Tips and strategies for home

Length: 1 hour (40-minute presentation, 20-minute Q&A)

Cost: \$0 - complimentary for online or in-person (for local travel)

Inclusions: copy of presentation slides, key summary sheets, information handouts

Extras: non-local travel (20+ minutes), personalised content (*quote provided upon enquiring*)





# Parent Presentations

## Prep Readiness: A SP and OT Perspective

Topics covered:

- What do Speech Pathologists/ Occupational Therapists do?
- Key skills for the Prep classroom
- Tips and strategies for home



Length: 1 hour (40-minute presentation, 20-minute Q&A)

Cost: \$0 - complimentary for online or in-person (for local travel)

Inclusions: copy of presentation slides, key summary sheets, information handouts

Extras: non-local travel (20+ minutes), personalised content (*quote provided upon enquiring*)



## Multilingual Communication: Supporting Many Languages

Topics covered:

- Key characteristics of multilingual communication development
- How to support development at home
- When to get further help

Length: 1 hour (40-minute presentation, 20-minute Q&A)

Cost: \$0 - complimentary for online or in-person (for local travel)

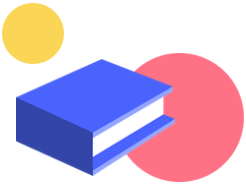
Inclusions: copy of presentation slides, key summary sheets, information handouts

Extras: non-local travel (20+ minutes), personalised content (*quote provided upon enquiring*)





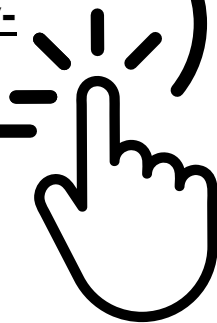
# Parent Presentations



## Ready to Support your Families?

Book your parent presentation now by submitting your enquiry to our Non-Therapy Services Coordinator:

<https://www.cooeespeech.com.au/services/community-connections>



For any non-enquiry questions or thoughts (e.g. which presentation should we select, what other topics are coming), reach out to Cooee's Non-Therapy Services Coordinator

Thida

[thida@cooespeech.com.au](mailto:thida@cooespeech.com.au)



Educator  
**Essentials**



# Online Tools & Resources

## Growing Language for the Multilingual Child (Workbook)

Topics covered:

- What multilingual means
- What you can expect multilingual communication to look like
- General strategies and principles for supporting communication
- Practical activity ideas (with templates you can use to plan)

**Workbook**

### Growing Language for the Multilingual Child



Cost: \$85 (incl. sales tax + delivery)

Postage & Delivery: posted in 1-3 business days (see website for delivery details)

## Multilingual Communication Development for Children (Online Training Series)

**Online Course**

### Multilingual Communication Development for Children



Topics covered:

- What multilingual development looks like
- Key features of language development, and areas to focus on
- When extra support is needed
- Strategies that can be used at the centre (and recommended to families)

Length: self-paced (up to 3 hours)

Cost: \$135 (incl. sales tax)

Inclusions: worksheet for each lesson

Extras: follow-up consultations (*quote provided upon enquiring*)



Educator  
**Essentials**



# Online Tools & Resources

## Information Sheets (Free Downloadables)

Fact sheet bundles and free eBooks on a range of topics to support early development.

What's currently available:

- Helping Little Learners Thrive Pack
- Working with Multilingual Children (eBook)

Length: 1 to 4+ pages per downloadable  
Cost: \$0 (free!)

### Fact Sheet Bundle

Helping Little Learners Thrive Pack



### Free Download

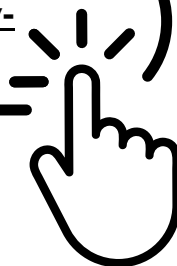
Working with Multilingual Children



## Ready to Explore?

Purchase/download your resources now through our Educator Essentials platform:

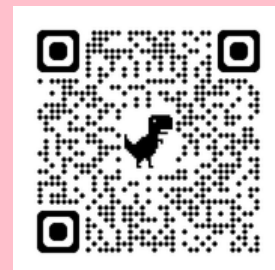
<https://www.cooeespeech.com.au/services/community-connections>



For any non-enquiry questions or thoughts (e.g. which resource is right for me, how to use the downloadables), reach out to Cooee's Non-Therapy Services Coordinator

Thida

[thida@cooeespeech.com.au](mailto:thida@cooeespeech.com.au)



Educator Essentials



# Collaborative Partnerships

## Program for Regulation

It is a structured 10-week program led by an Occupational Therapist in the area of regulation. It is designed to upskill educators in the areas of emotional and behavioural regulation, including the skills that come into regulation and the adjustments that can be made to support regulation for the whole student group.



### Outcomes:

1. Children accept co-regulation and build skills towards self-regulation
2. Children to be part of the group in learning activities
3. Children to be more connected and engaged with learning and other people (children and educators)
4. Educators to support the children to filter important information in the classroom environment and shift attention between tasks

*Individualised outcomes specific to the learning cohort and/or centre can be tailored upon enquiry.*

### Service includes:

- Classroom observation, assessment & evaluation
- Environmental sensory evaluation & analysis summary + feedback meeting
- Program of support (with strategy, activity and adjustment recommendations for the group)
- 3x 50-minute educator consultations (Occupational Therapist)

Length: 10-week term

Cost: \$3,850 (including GST)

### Extras (including GST):

- Travel - Local = \$100 per hour; Outside of Brisbane = \$100 per hour + costs (flights, accommodation)
- Individual student evaluation and adjustment recommendations = \$600 per child
- Additional educator consultation (Speech Pathologist or Occupational Therapist) = \$220
- Visual schedule pack: \$44 per pack of 4
- Communication Board / Aided Language Display: \$44 per pack of 4
- Visual Regulation Choice Board: \$22 per board
- Booklet of Visuals, Communication Boards and/or Activities: \$99 per 20 pages





# Collaborative Partnerships



## Consultative Learning

Consultative advice sessions responsive to the needs of your setting and educator team, with the goal of providing education and recommendations on areas of childhood development that relate to the Speech Pathology and/or Occupational Therapy scopes of practice (e.g. communication, regulation, attention). This service supports problem-solving for educators and offers guidance to enhance participation and learning for all children.

Service options:

- **Frequency:** One-off (Single-session) or Recurring (repeated sessions booked over an agreed time period - e.g. monthly for 6 months)
- **Method:** Online or in-person sessions (*in-person has a travel fee*)
- **Facilitator:** 1 Speech Pathologist (SP), or 1 Occupational Therapist (OT), or both a SP & an OT
- **Support Level:** Generalised (education across all areas of SP/OT - e.g. emotional regulation, language support), or Advanced (education across specialty areas - e.g. complex communication or support needs)

Service includes:

- Session with clinician/s
- Follow-up email with summary (and required information sheets)

Length: 1-hour session

Cost: (see below)

Generalised = \$275 for 1 clinician, \$440 for 2 clinicians (GST inclusive);

Advanced = \$358 for 1 clinician, \$605 for 2 clinicians (GST inclusive)

Travel - Local = \$100 per hour

Travel - Outside of Brisbane = \$100 per hour + costs (flights, accommodation)

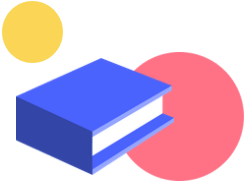
(Total service quote provided upon enquiry, after confirming the preferred service options)



Educator  
**Essentials**



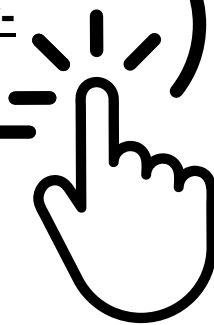
# Collaborative Partnerships



## Ready to Explore?

Book your Collaborative Partnership now by submitting your enquiry to our Non-Therapy Services Coordinator:

<https://www.cooeespeech.com.au/services/community-connections>



For any non-enquiry questions or thoughts (e.g. which level of support should I choose, do we need SP or OT), reach out to Coeee's Non-Therapy Services Coordinator

Thida

[thida@cooespeech.com.au](mailto:thida@cooespeech.com.au)



Educator  
**Essentials**



Follow us!

# Connect with Cooee

 Instagram


Follow our videos, information & see what our team is up to!



 Youtube

Longer informative videos on key developmental topics



 Read our blog

Longer written pieces diving into developmental areas



 Visit the Website

Information about our services, our team, funding & how to get started



**Alderley Clinic**  
**468 Enoggera Road**  
**Open Monday - Friday 7am - 6pm &**  
**Saturday Morning**



07 3265 4495 - [info@cooespeech.com.au](mailto:info@cooespeech.com.au)



# Educator **Essentials**